

Cove Park creates year-round residencies in all the art forms for national and international artists. Located on an outstanding 50-acre site overlooking Loch Long, the Cowal Peninsula and the Firth of Clyde, Cove Park is just one hour from Glasgow. A unique range of accommodation units and studios, and an award-winning Artists Centre, have been designed to host creative residencies and retreats for those working individually and in groups.



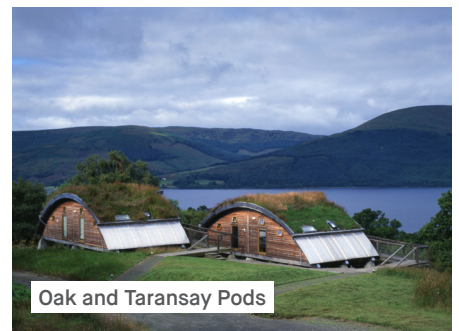
The Artists Centre overlooking Loch Long

ACCOMMODATION

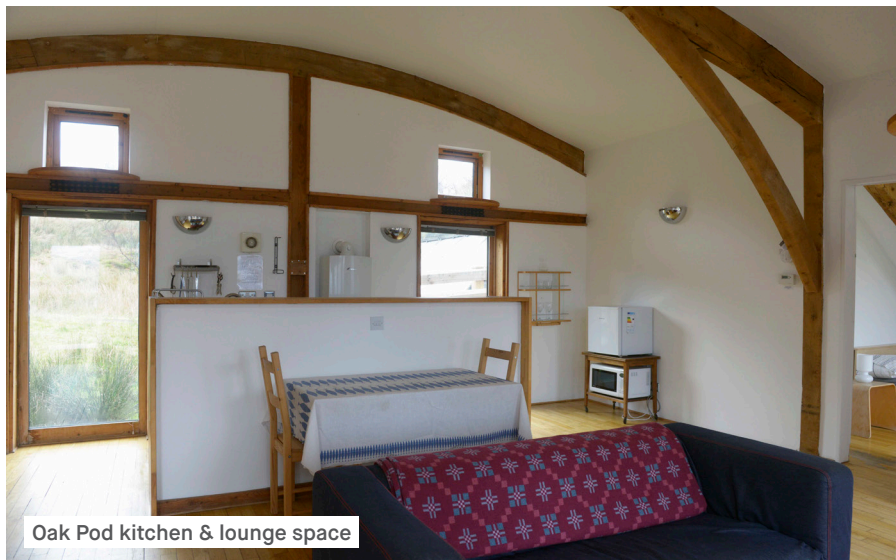
THE PODS

- Oak Pod has 2 double bedrooms, each with an en suite bathroom with roll-top bath, a large lounge with a desk, sofa and shared kitchen area.
- Taransay Pod has 2 bunk-bed bedrooms, which can accommodate up to 5 people between them. Each bedroom has an en suite bathroom with roll-top bath and a kitchenette, and there is a shared lounge space with a sofa, piano and desk.

The Pods are £145 each per night (£132 after 5 nights).



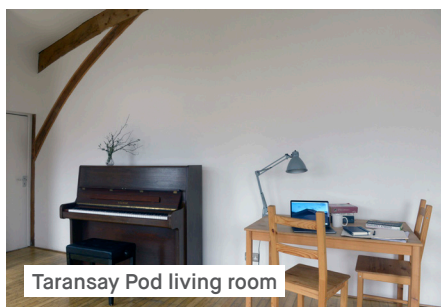
Oak and Taransay Pods



Oak Pod kitchen & lounge space



Oak Pod has two double bedrooms



Taransay Pod living room



Both Pods have en-suite bathrooms



Taransay Pod has two bunkbed rooms

THE CUBES

Cove Park has 6 'cubes' — fully insulated, converted shipping containers which each have a double bed, desk, kitchenette and WC/shower.

The cubes are £66 per night (£60 after 5 nights).



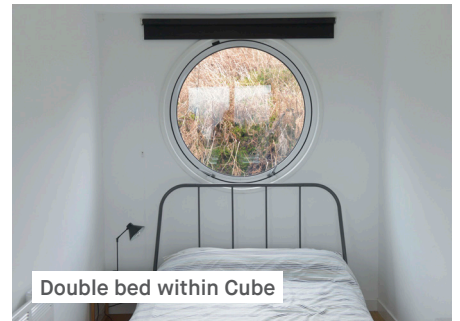
Kitchenette within Cube



A Cube



3 of the Cubes



Double bed within Cube

ARTISTS CENTRE ACCOMMODATION

Cove Park's fully accessible Artists Centre, the Jacobs Building, was opened in 2016. Adjoining the Artists Centre are 2 new bedrooms, each with a desk, en suite wet room and kitchenette. Each bedroom has its own studio.

The bedrooms are £80 per night (£72 after 5 nights).



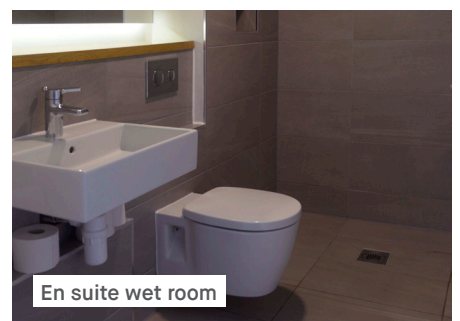
Artists Centre accommodation



Artists Centre accommodation



Studio attached to bedroom, 29 sqm



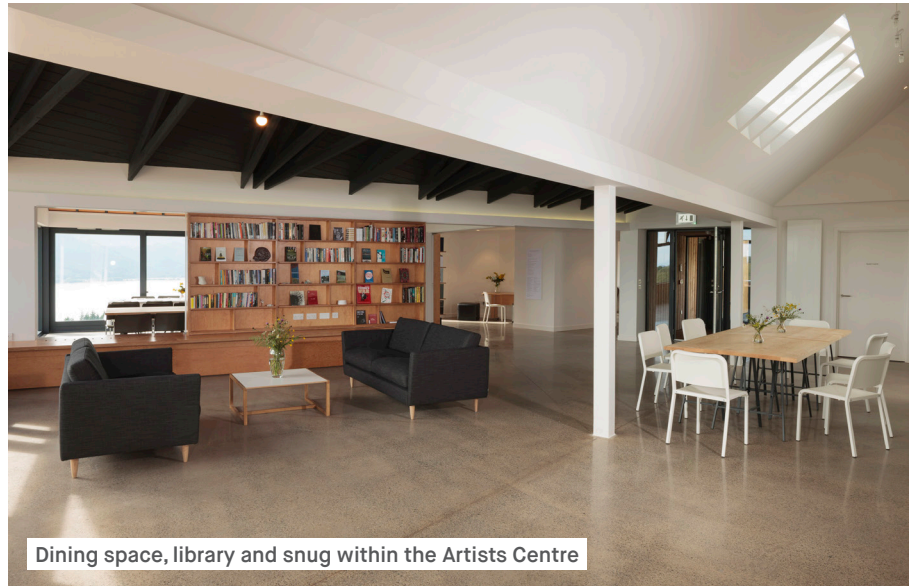
En suite wet room

COMMUNAL SPACES AND ADDITIONAL STUDIOS

THE ARTIST CENTRE

The new Artists Centre houses meeting and workshop spaces, a large communal kitchen and dining area, the library, archive and snug with log-burner and sofas. The whole building is wifi enabled and available to residents 24 hours a day.

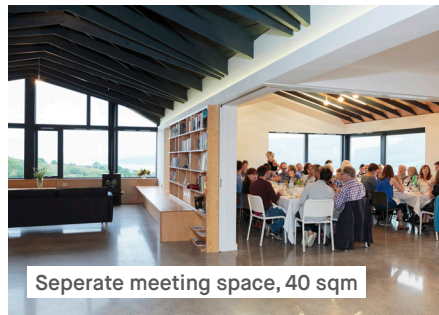
Use of all of these spaces is free.



Dining space, library and snug within the Artists Centre



Seperate meeting space, 40 sqm



Seperate meeting space, 40 sqm

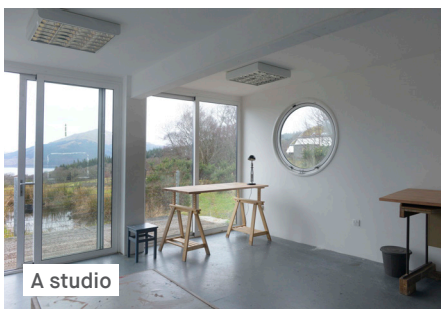


Workshop space, 72 sqm

THE STUDIOS

In addition, we have 3 further artists studios, housed in fully insulated, converted shipping containers.

Use of the studios is free.



A studio



3 studios, 30 sqm each

The whole site can accommodate 12 people (14 if sharing). Residencies start on a Monday or Thursday, with arrivals between 1pm and 3pm. A full handbook including details of transport links, how and where to buy food and what to bring with you to Cove Park is sent to each resident well ahead of arrival. The shortest residency is 3 nights.

During school holidays and on occasional weekends we run 'Hands-On Cove Park', a programme of workshops and classes for our local community, run by former Cove Park artists. Residents are informed of any activity taking place onsite ahead of their residency.

Please sign up to receive our newsletter and follow us on social media to keep up to date with all our opportunities.

To enquire about bringing your project, group or practice to Cove Park please contact Catrin Kemp catrin.kemp@covepark.org

Cove Park
Peaton Hill
Argyll and Bute
G84 OPE

+44 (0) 1436 850 500

🐦 @CovePark
📷 @cove_park
📌 Cove Park

Cove Park is a company limited by guarantee [SC201042] and a registered charity [SC029530]

All imagery by Alan Dimmick or Ruth Clark.



ALBA | CHRUTHACHAIL